



ADAMS OFFSHORE SERVICES LIMITED,
5th Floor, Regent Center,
Regent Road, Aberdeen,
United Kingdom - AB11 5NS

DSV ADAMS VISION



Specification Brochure

All logos and trademarks listed in this document are the exclusive property of their respective organizations

Vessel Specification Booklet

DSV ADAMS VISION



DSV ADAMS VISION

The "ADAMS VISION" is a Dive, Multi Support and Construction ship, designed to meet the needs of the offshore subsea industry. The ship is equipped with very efficient azimuth thrusters and a DP/II dynamic positioning system for safe and economic operations on a world wide scale. The vessel will be fitted with a 9 man saturation diving system, with 3 man bell and supporting air dive system. The ship, with its diesel electric propulsion system and optimized hull lines, is designed for low fuel consumption and excellent sea-keeping. The high focus on reduced fuel consumption means also lesser emission to the environment. The vessel was originally designed according to the class notation "Clean Class", "COMF-V rate 3" and built according to DnV's new notation "NAUT OSV".



Main Particulars	
Flag	Bahamas
Built	2009
DP System	DP2
Gross Tonnage	4850
Net Register Tonnage	1450
Dead Weight	4500Te
Maximum Speed Approx	15.5 knots
Fuel Type	MGO

Dimensions	
Length Overall	93.6m
Length BP	86.6m
Breadth	19.7m
Depth	7.85m
Max Draft	6.3m
Freeboard	1562mm

Main Features	
Main Crane	100Te Hydramarine Offshore Knuckle Jib Crane Active Heave Compensated 1Te Man Riding Capacity
Deck Cranes	2 x 5Te @ 15m outreach. One man riding certified.
Deck Capacity	1046 m2 area, 10t/m2 loading
ROV	(Optional)
Moonpool	6.0 x 5.28m

Main Features	
Ballast Water	1530m3
Drill Water	1310m3
Fresh Water	1000m3
Fuel Oil	1150m3

All Commercial Queries to be addressed to:

Adams Offshore Services Limited
5, Regent Centre
Regent Road,
Aberdeen, U.K. AB11 5NS

Tel: 01224 765 300
email: chartering@adams offshore.net
commercial@adams offshore.com

CLASSIFICATION:

+ 1A1 ICE-C Supply Vessel OILREC SF LFL* COMF-V(3) HELDK-S E0 DYNPOS-AUTR NAUT-OSV(A) CLEAN DK(+) HL(2.8)

ABS +A1, CIRCLE E, +AMS, +DPS2

MAIN ENGINES:

Diesel Electric
4 x Caterpillar 3516HD Main Engines
4 x ABB / AvK 690V-60Hz Generators 2100 ekW
2 x Caterpillar C18 Auxiliary Engines 550 ekW

MAIN PROPULSION

Rolls Royce Marine AS:

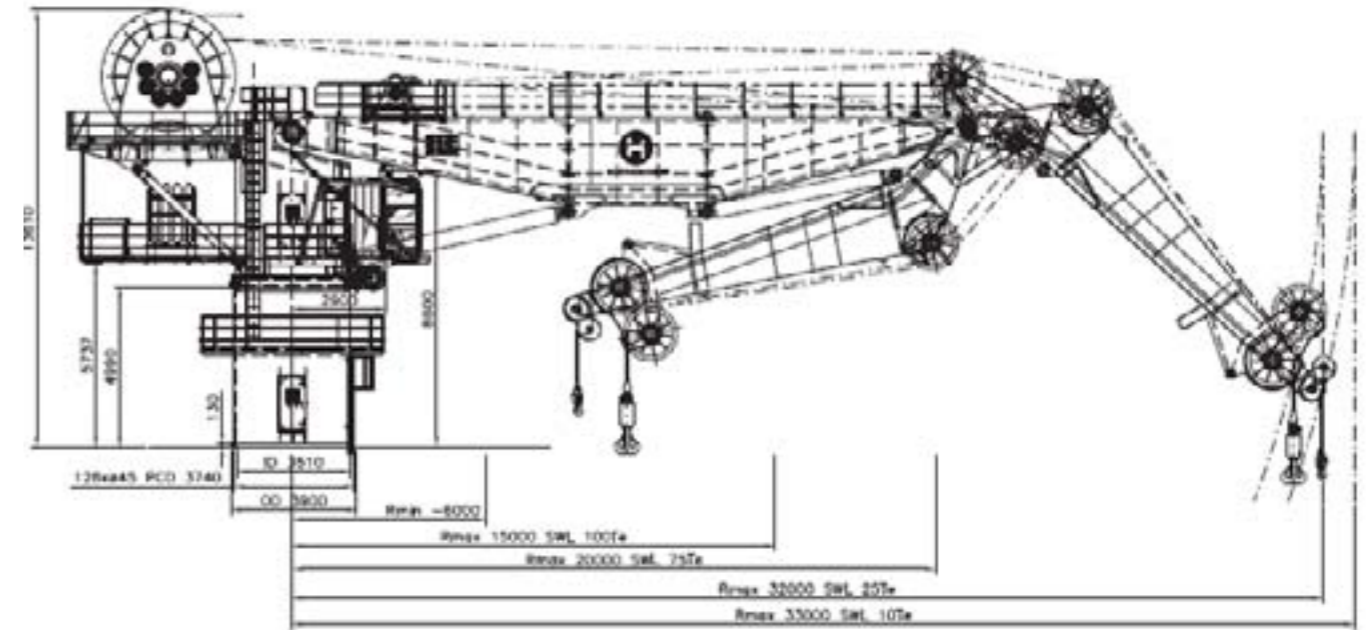
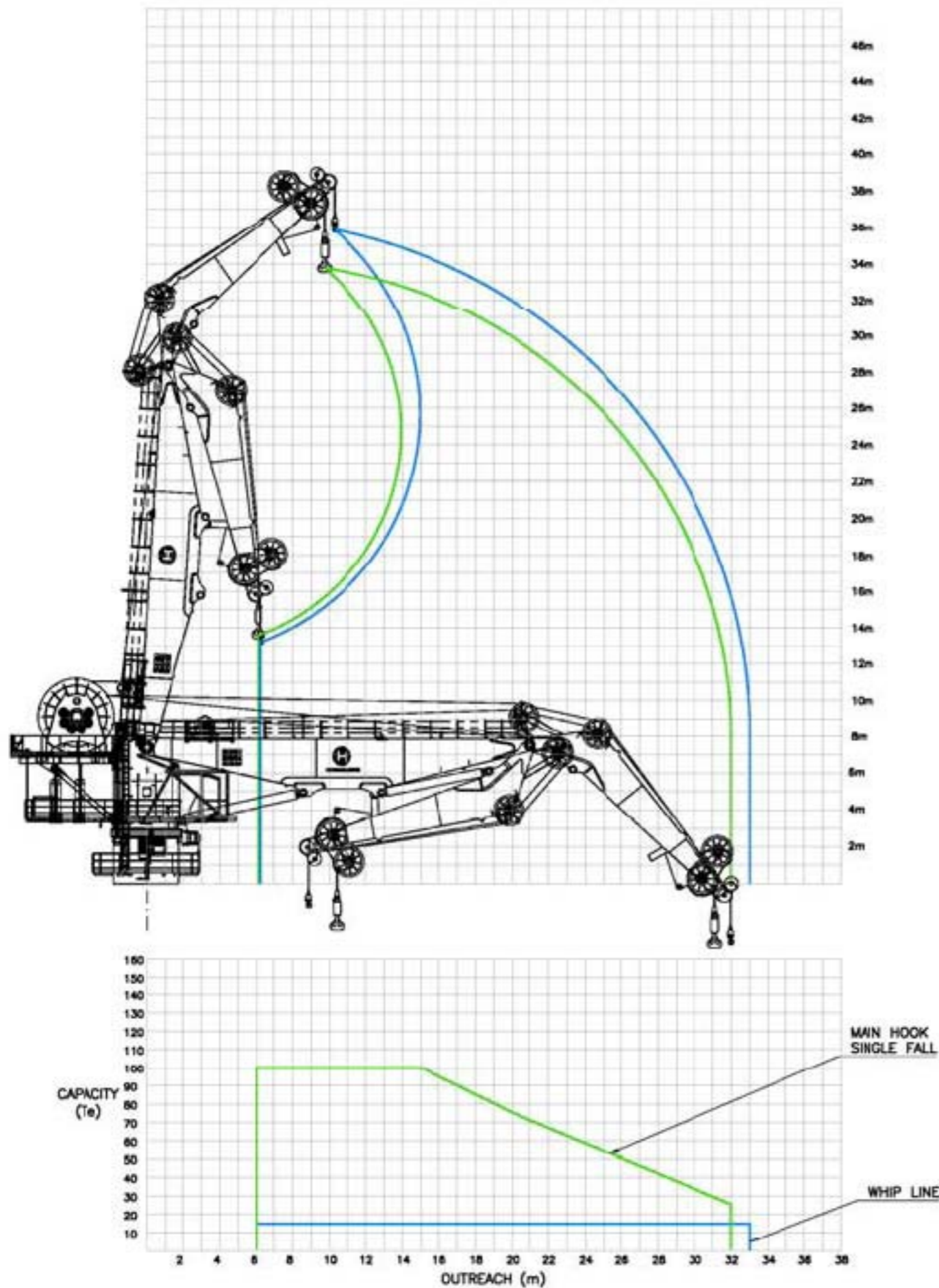
Main Propellers	2 x Azimuth Thrusters AZP 100 FP
Retractable Thrusters	1 x Retractable Azimuth Thruster
Tunnel Thrusters	2 x Tunnel Thrusters TT 2200 DP CP

SPEED/FUEL CONSUMPTION

In Port	Estimated 1.5 tons/day
Transiting at 12 knots	Estimated 15 tons/day
DP Operation	Estimated 5 - 6 tons/day
At Full Speed Transit (15 knots)	Estimated 27 tons/day



CRANE CURVE

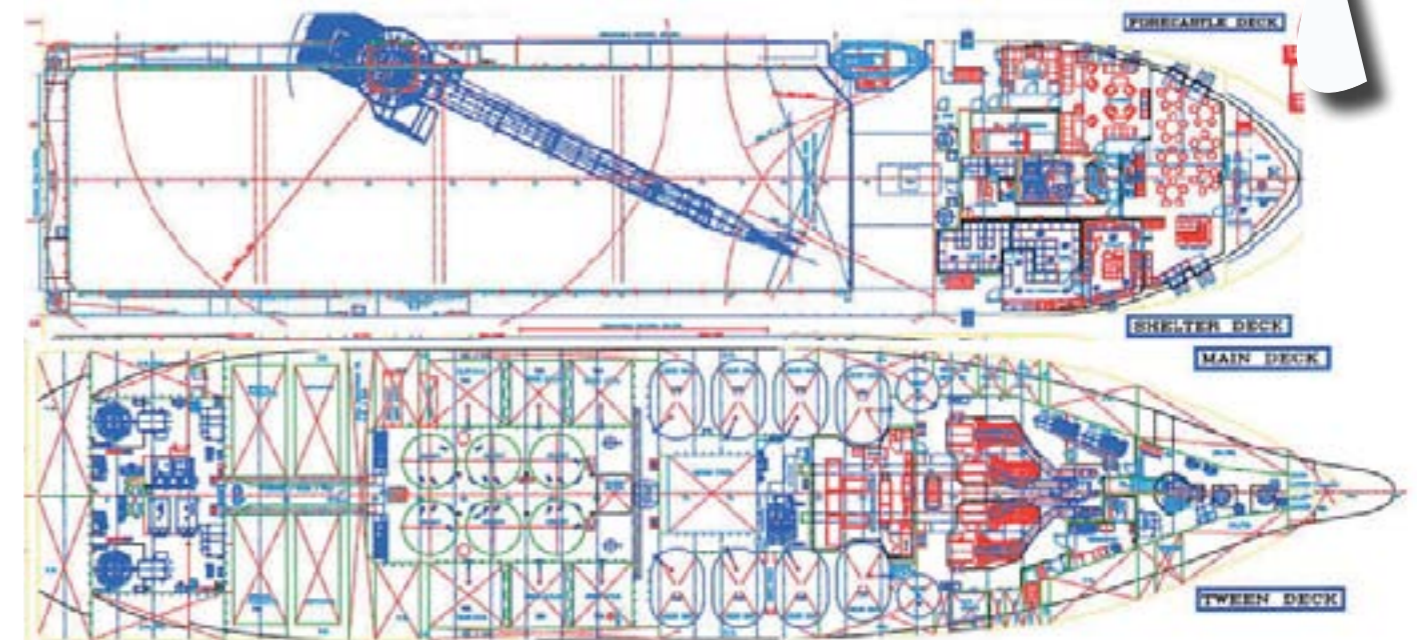


100 ts Knuckle Jib Offshore Crane w/AHC- Hydrmarine HMC 3568
 -Focus on hoisting speed / capacities – clients requirements
 -Designed for up to 3,000 m water depth – 64 mm galv non rotating wire

Hoisting Speed single line 0-33 tons: .. 0-80 m/min
 Hoisting Speed single line 33-66 tons: 0-80-40 m/min
 Hoisting speed single line 66 – 100 tons: 0-40-20 m/min
 Minimum work radius: Approx 5 meters
 Active Heave Compensation (example)
 - Heave Period: 10 sec
 - Nom Displacement: +/-3.2 m (6.4 m total motion)
 - max acceleration: 1.8 m/s²
 - max comp. speed: 2.0 m/s
 Aux Hook Lifting Caps: 10 metric tons @ 33 m outreach
 - Hook travel length: 150 mtr
 - Certified for man riding

Lifting Capacities:

- 25 metric tons @ 32 m outreach single line (max)
- 75 metric tons @ 20 m outreach single line
- 100 metric tons @ 15 m outreach single line
- Winch / Crane are in base case designed for SWL 100 single line resulting crane load
- 75 ts SWL to 2,000 m depth giving 100 ton resulting crane load @ max rad 15m



EMERGENCY/HARBOUR GENERATOR

1 x Caterpillar Emergency Generator 160 eKW

DYNAMIC POSITIONING:

Kongsberg K-Pos DP-22
1 x DGPS
1 x Fanbeam
1 x Bandak LTW
1 x HiPAP 500

NAVIGATION & COMMUNICATION EQUIPMENT:

Satellite System providing voice and data (e-mail, internet) throughout vessel
VHF and UHF radios available for project use in addition to standard vessel complement

ROV CONNECT

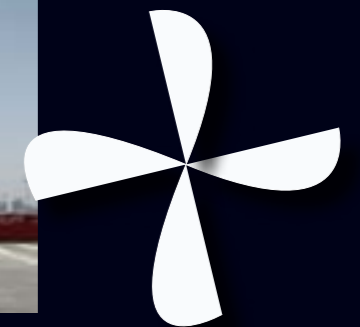
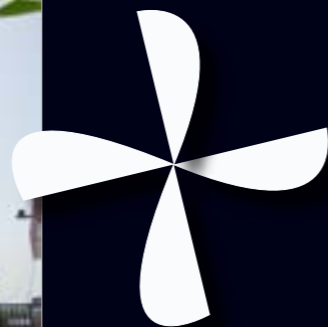
ROV Connection:	2 x 1250 kVA 450V 60 Hz with connection box on main deck.
ROV Connection:	1 x 50 kVA 690/230V 60Hz with connection box on main deck

HELIDECK

The Helideck has a 21m diameter, suitable for a Sikorsky S-92 design helicopter.

ACCOMMODATION

- 68 Persons total
- 18 x 1 man cabins
 - 25 x 2 man cabins
 - Hospital 1 off + 4 off ward beds



General Arrangement

ADAMS VISION
ADAMS OFFSHORE SERVICES LIMITED

